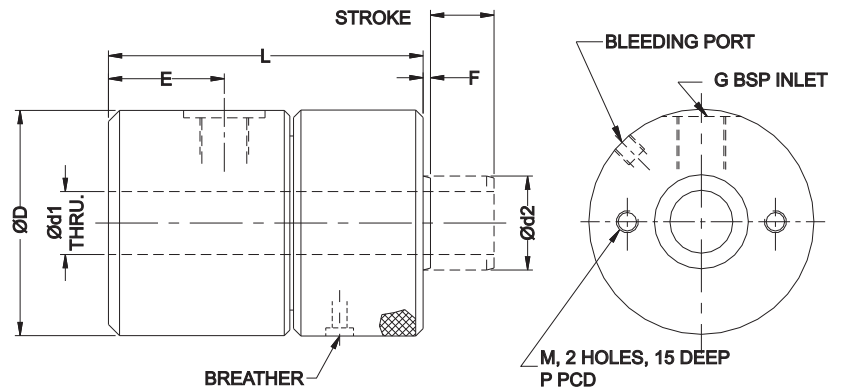
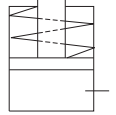




Hollow Piston Cylinder

single acting (spring return), push type



Description

Hollow piston cylinders are single acting, spring return cylinders, suitable to use with hydropneumatic intensifiers. The piston is provided with a through hole.

Advantages

Hollow piston cylinders can be easily adapted on existing fixtures. The cylinder can be mounted on the stud, by increasing the stud length. Automation can be achieved very fast.

Installation

With the help of a back mounting plate, the hollow piston cylinder can be mounted on the stud as shown in fig.1.

The cylinder can also be used to pull the stud, by mounting it on the other side of the base plate as shown in fig.2. For this arrangement, a wiper should be provided to the stud for 10 mm stroke cylinders.

Specifications

- ◆ Maximum oil pressure - 200 bar.
- ◆ Return spring back pressure - @ 1 bar.

Notes

- ◆ As the cylinder is single acting, spring return, a breather is provided. It should be protected from cutting liquids and coolants.
- ◆ For ordering the seal kit, add the prefix "S" to the part number.

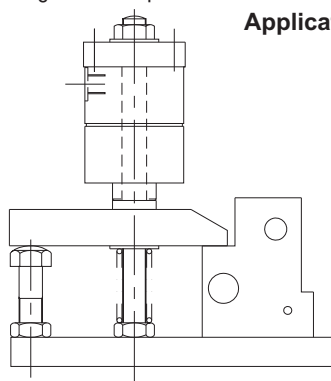
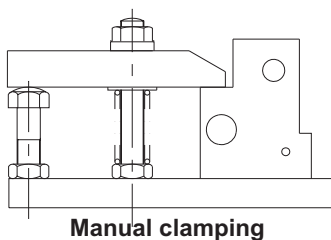
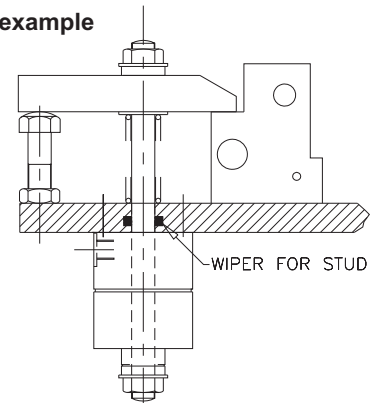


Figure 1



All dimensions are in mm
Overall dimension tolerance ± 0.5 mm

FORCE §	11 kN	13 kN	22 kN	22 kN	33 kN	33 kN	50 kN	50 kN
D	61	56	68	68	78	78	98	98
d1	17	13	17	17	20.5	20.5	25	25
d2	25.4	25.4	25.4	34.9	31.7	40	40	50
E	28	21	12	21	18	18	18	18
F	2	2	2	2	3	3	3	3
G	1/4"	1/4"	1/4"	1/4"	3/8"	3/8"	3/8"	3/8"
M	M 6	M 6	M 8	M 8	M 10	M 10	M 10	M 10
P	40	40	55	55	60	60	60	60
PART NO.	1510100	1510200	1520100	1520200	1530100	1530200	1540100	1540200
STROKE±1	10	25	10	25	10	25	10	25
L	85	103	80	110	82	110	90	110
OIL VOL.	7.5 cc	22 cc	15 cc	37 cc	22 cc	55 cc	34 cc	85 cc
Min Spring Force	232 N	173 N	381.1 N	244 N	432.9 N	422 N	756.5 N	441 N
WEIGHT	1.5 kg	1.5 kg	2 kg	2.5 kg	2.5 kg		3.6 kg	5 kg
PART NO.	-	1510300	-	1520300	-	1530300	-	1540300
STROKE±1	-	50	-	50	-	50	-	50
L	-	160	-	160	-	160	-	160
OIL VOL.	-	44 cc	-	74 cc	-	110 cc	-	170 cc
Min Spring Force	-	207 N	-	310 N	-	415.6 N	-	503.9 N
WEIGHT	-	2.3 kg	-	4 kg	-	4.5 kg	-	6.5 kg

§ Force is specified at 150 bar.