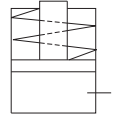




Manifold Mounting Cylinder single acting (spring return) , push type



Description

These clamping cylinders are single acting spring return cylinders. These cylinders are fitted either in tapped hole in fixture, or in manifold. Sealing 'O' Ring is provided on the face of the cylinder.

Advantages

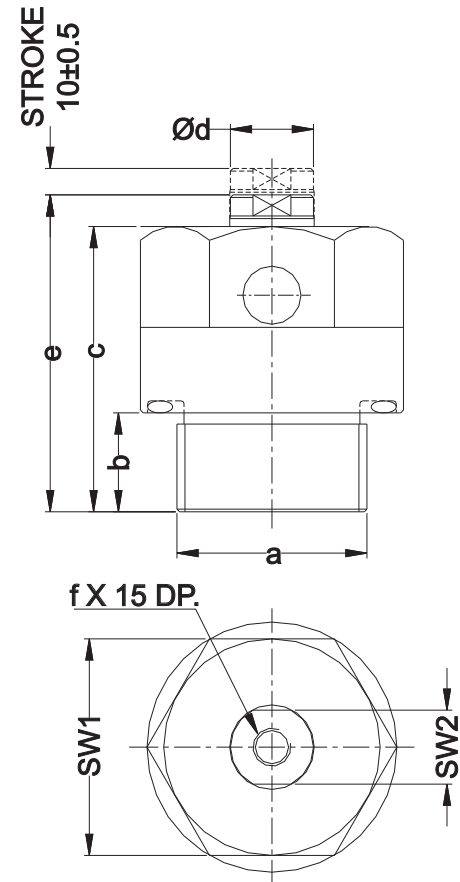
These cylinders are suitable to clamp smaller workpieces & when two or more jobs are clamped with short distance in between. The advantage of these cylinders is piping gets eliminated.

Installation

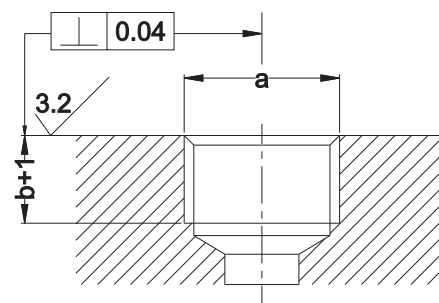
Sealing ring is provided on the face of cylinder, for proper sealing resting face should be flat & square to thread axis.

Notes

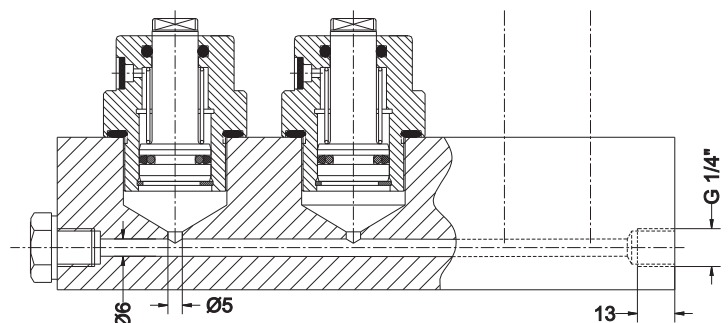
- ◆ Manifold mounting cylinders must not be subjected to a load in retracted position.
- ◆ These cylinders must not be loaded in unpressurised mode. Minimum wall thickness 3 mm for manifold. Aggressive cutting fluids & coolant can damage elastomer of the seal. Sealing may not be effective in this case. Hence breather must be protected from these fluids.
- ◆ For ordering the seal kit, add the prefix "S" to the part number.



Manifold details



Application example



PART NO.	1703500	1703600	1730700	1730800
FORCE §	0.75 kN	3 kN	7.22 kN	12 kN
Ø Bore	8	16	25	32
a	M12x1.5	M24x1.5	M36x1.5	M42x1.5
b	13	14	21	25.8
c	40	45	52	59
d	5	10	16	20
e	46	51	58	65
f	NA	NA	M10	M12
SW1	16	27	41	50
SW2	NA	8	14	16
Max. seating torque (Nm)	10	110	130	225
Min Spring Force	12.7 N	57.7 N	106.3 N	164.9 N
Weight	55 gm	190 gm	580 gm	1030 gm
OIL VOLUME	0.5 cc	2 cc	5 cc	8 cc

§ Force is specified at 150 bar.

Subject to change for improvement

All dimensions are in mm
Overall dimension tolerance ± 0.5 mm