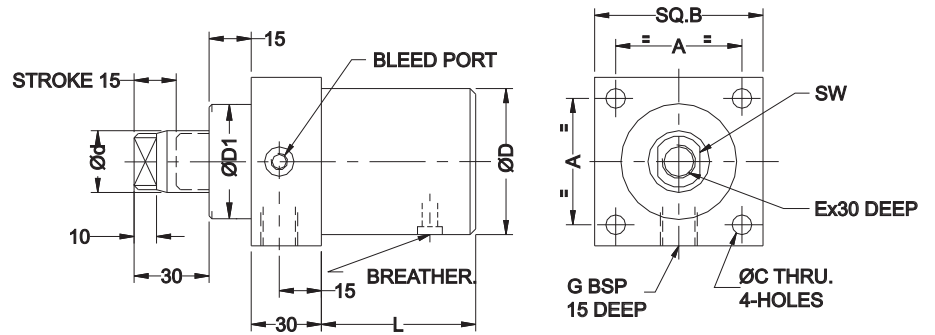
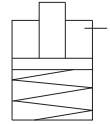




Pull Cylinder

single acting (spring return), pull type, front flange mounting



Description

Pull cylinders are single acting, spring return cylinders, suitable for use with a hydropneumatic Intensifier.

Installation

A square flange with 4 mounting holes is provided on the front side for mounting purpose. The cylinder can be mounted on the front flange as shown in fig. 1. The cylinder can be mounted on the back side with long screws as shown in fig. 2.

Specifications

- ◆ Maximum operating pressure - 200 bar.
- ◆ Return spring back pressure - 1 bar.

Note

- ◆ As the cylinder is single acting, spring return, a breather is provided. It should be protected from the cutting liquid and coolant.
- ◆ Heavy extensions to the piston rod can influence the return stroke of the cylinder.
- ◆ For ordering the seal kit, add the prefix "S" to the part number.

PART NO.	1910100	1920100	1930100
FORCE §	11 kN	22 kN	30 kN
ØBORE	38	50	60
STROKE±1	15	15	15
A	45	55	68
B	60	67	85
C	7	9	11.0
D	52	62	78
D1	38	45	65
d	22	25	32
E	M 12	M 16	M 20
G	1/4"	1/4"	3/8"
L	50	50	58
SW	17	20	28
MIN SPRING FORCE	415 N	501 N	507 N
OIL VOL	12 cc	22 cc	30 cc
WEIGHT	1.5 kg	2.5 kg	3.5 kg

§ Force is specified at 150 bar.

Application example

Figure 1

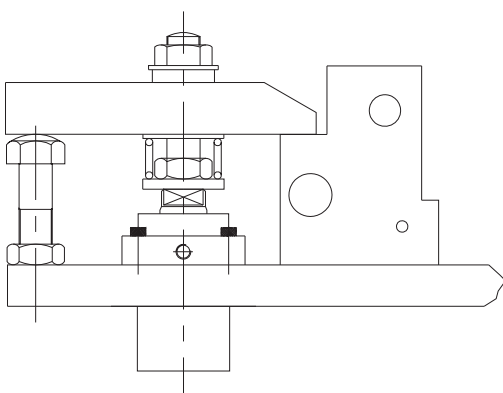
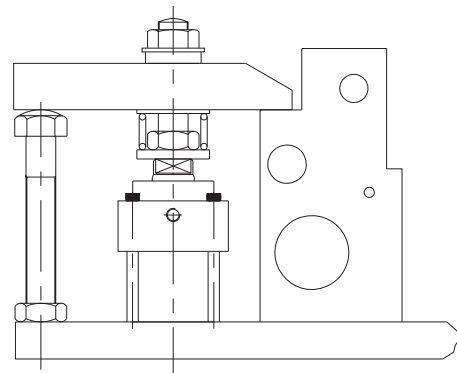


Figure 2



All dimensions are in mm
Overall dimension tolerance ± 0.5 mm