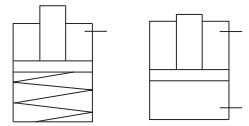




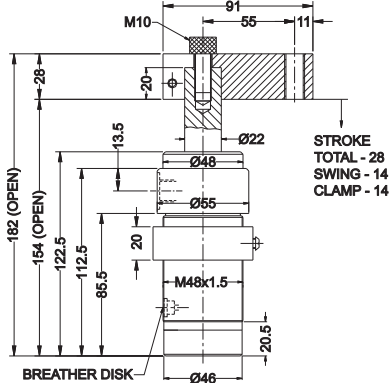
Swing Cylinder

without overload protection
threaded body, flange mounting, single / double acting



Threaded Mounting Single Acting

TYPE	PART NO. WITH STRAP
SW CW	3541900
SW CCW	3542000



Description

Swing cylinders are pull type cylinders. The piston rotates by 90° during the swing stroke, followed by straight stroke due to the cam.

Application

The clamping strap rotates by 90° while clamping and declamping. Due to the swing action, loading and unloading of the job is very easy. In the unclamped position, the workpiece area is free from the strap.

Versions

Following versions are available.

Type of cylinder

SW - Single acting (spring return)

DSW - double acting

Swing direction

(While clamping & looking from rod side)

CW - clockwise

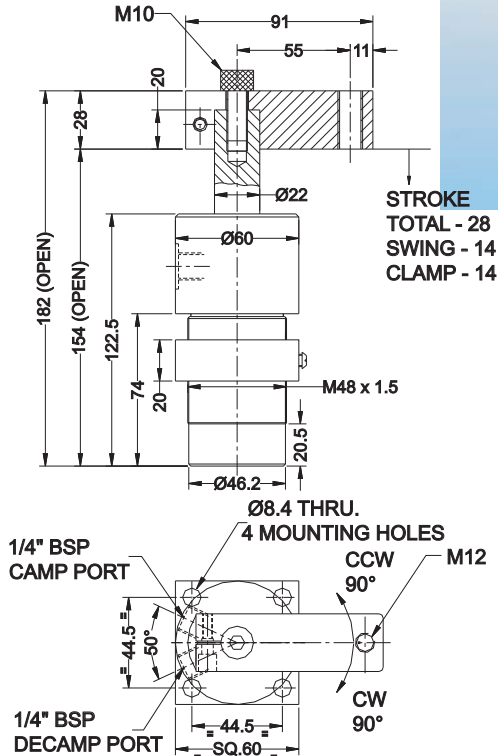
CCW - counter clockwise

Specifications

- ◆ Bore diameter - 30 mm.
- ◆ Maximum oil pressure - 200 bar.
- ◆ Minimum oil pressure - 20 bar.
- ◆ Oil volume clamp - 9.2 cc.
- ◆ Oil volume declamp - 19.8 cc.
- ◆ Force at 150 bar - 5.0 kN.
- ◆ Weight of the cylinder - 2.8 kg.

Threaded Mounting Double Acting

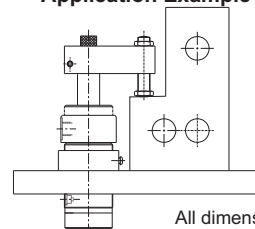
TYPE	PART NO. WITH STRAP
DSW CW	3542100
DSW CCW	3542200



Important notes

- ◆ To avoid damage to the swing mechanism -
 - Hold the clamping strap in a vice or spanner, while tightening and loosening the cap screw (M 10).
 - Clamp the job in the straight clamping stroke only.
- ◆ Double acting cylinders are suitable with the hydraulic power unit.
- ◆ Single acting cylinders are suitable with the hydropneumatic intensifier.
- ◆ Do not exceed the standard strap length.
- ◆ Adjust the oil flow rate in such a way so that the total clamping time will be more than one second.
- ◆ For height adjustment, either use a spacer at the mounting plate or adjust the clamping bolt on the strap. (fig.below)
- ◆ For horizontal mounting of single acting cylinders, weight of the strap should assist the declamping swing stroke.
- ◆ Breather should be protected from cutting liquids and coolants.
- ◆ For ordering the seal kit, add the prefix "S" to the part number.

Application Example



All dimensions are in mm
Overall dimension tolerance ± 0.5 mm