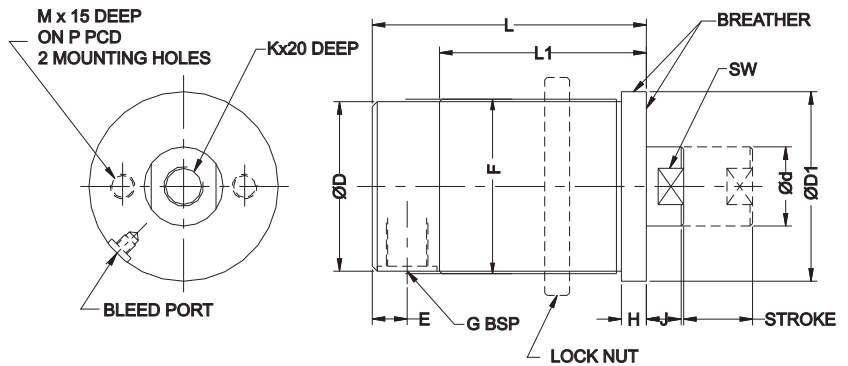
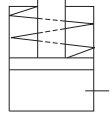




# Threaded Body Cylinder

## single acting (spring return), push type



**Description**

Solid piston threaded body cylinder is single acting, spring return cylinder, suitable to use with hydropneumatic intensifier.

**Advantages**

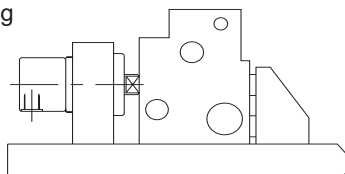
The cylinder is most simple in construction and very easy for maintenance. The piston force can be directly used for clamping (fig. 1) The piston force can be increased by using a clamping strap leverage (fig. 2)

**Installation**

The cylinder can be mounted in two ways -

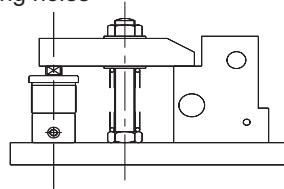
- 1) Against front collar with threaded lock nut

**Figure 1**



- 2) With back mounting holes

**Figure 2**



**Specifications**

- ◆ Maximum oil pressure 200 bar.
- ◆ Return spring back pressure @ 1 bar.
- Note**
- ◆ As the cylinder is single acting spring return, a breather is provided. It should be protected from cutting fluid and coolant.
- ◆ Heavy extensions to piston rod can influence return stroke of the cylinder.
- ◆ Lock nut has to be ordered separately.
- ◆ For ordering the seal kit, add the prefix "S" to the part number.

FORCE §	3 kN	5 kN	10 kN	18 kN	30 kN	30 kN	50 kN
ØBORE	16	20	30	40	50	50	65
D	21.8	27.5	43.5	54.5	67.5	67.5	83
d	9.52	11.09	15.87	20.6	25.4	25.4	34.9
D1	30	36	54	65	78	78	96
E	9	10	12	12	14	14	14
F	M 24 x 2	M 30 x 2	M 46 x 2	M 57 x 2	M 70 x 2	M 70 x 2	M 86 x 2
G	1/8"	1/8"	1/4"	1/4"	3/8"	3/8"	3/8"
H	12	12	12	12	12	12	15
J	7	8	9	13	15	15	20
K	M 6	M 6	M 10	M 12	M 16	M 16	M 16
M	-	M 6	M 6	M 8	M 10	M 10	M 12
P	-	20	30	36	48	48	56
SW	8	10	13	18	21	21	30
PART NO.	1710100	1720100	1730100	1740100	1750100	1750300	1760100
STROKE±1	15	10	10	10	10	50	25
L	78	70	72	77	81	160	110
L1	58	49	47	52	54	90	83
Min Spring Force	79.8 N	131 N	197 N	265 N	461 N	321.8 N	516.3 N
OIL VOL	3 cc	3 cc	7 cc	13 cc	20 cc	100 cc	84 cc
WEIGHT	0.25 kg	0.5 kg	1 kg	1.5 kg	2 kg	3.5 kg	4.8 kg
PART NO.	-	1720200	1730200	1740200	1750200	1750400	1760200
STROKE±1	-	25	25	25	25	100	50
L	-	98	102	105	110	260	160
L1	-	65	77	80	83	140	90
Min Spring Force	-	110.38 N	179.0 N	245.5 N	404 N	296.6 N	529.7 N
OIL VOL	-	8 cc	18 cc	31 cc	50 cc	200 cc	166 cc
WEIGHT	-	0.7 kg	1.25 kg	2 kg	3 kg	5.2 kg	6.5 kg
<b>LOCK NUT ( ACCESSORY ) TO BE ORDERED SEPARATELY</b>							
PART NO.	1802300	1802400	1802500	1802600	1802700	1802700	1802800
D2	36 hex	46 hex	60 ø	75 ø	90 ø	90 ø	118 ø
W	10	10	10	10	12	12	15

§ Force is specified at 150 bar.

**LOCK NUT**



All dimensions are in mm  
Overall dimension tolerance ± 0.5 mm