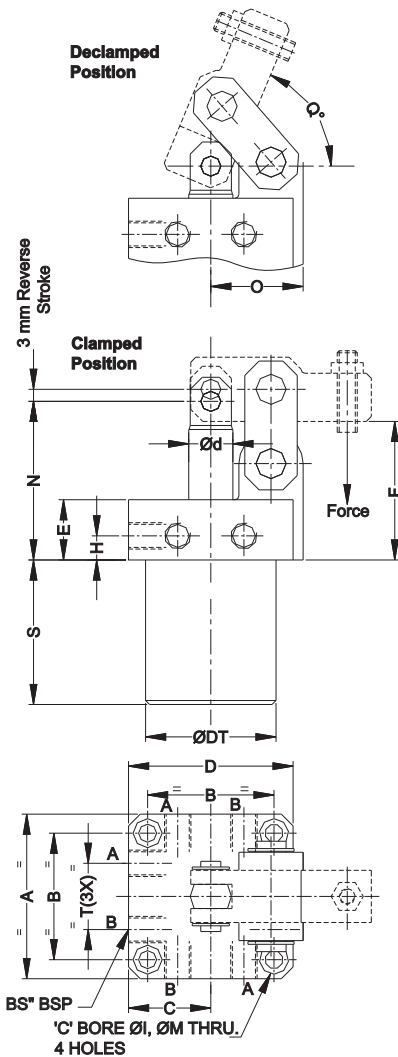
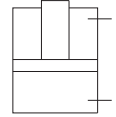




Vertical Swing Cylinder flange mounting, double acting



Vertical swing cylinders are used in applications similar to that of swing cylinders and can replace swing cylinders in many places. In the unclamped position, the work piece area is free from the strap, to facilitate easy loading / unloading.

Description

It is a double acting cylinder. The job gets clamped in the piston push direction. The clamping strap is connected to the piston by a linkage mechanism.

Installation and advantages

Installation of the cylinder is very simple with 4 cap screws on the top flange. Clamp and declamp ports are provided on face of the mounting flange as shown in figure..

Top of the cylinder body is angled to allow coolant and chips to flow away from wiper section.

Notes

- ◆ Standard strap has to be ordered separately. In case, a longer strap is required, it should be designed for increased bending moment.
- ◆ The adjusting screw on the strap should be adjusted for a 3 mm reserve stroke.
- ◆ For 3110800, two ports are at rear side only.
- ◆ Bore Ø80 details will be available on request.
- ◆ Manifold mounting and single acting versions will be available on request.
- ◆ For ordering the seal kit, add the prefix "S" to the part number.

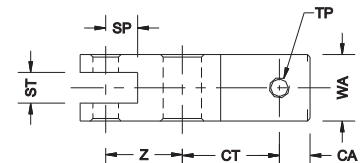
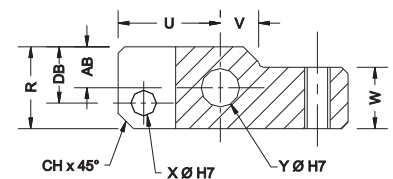
PART NOS. (WITHOUT STRAP)	3110800	3111800	3111600	3111900
CLAMPING FORCE §	5.7 kN	10.3 kN	14.8 kN	34.5 kN
ØBORE	25	32	40	63
PORTS	2	6	6	6
A	51	70	82	112
D	61	70	82	112
B	40	55	63	85
C	35.5	35	41	56
F	51	62	69	97
T	22	30	33	42
d	14	18	22	36
E	26	28	30	36
H	12	11	12	14
N	57	70	79	113
S	47	60	72	102
DT	48	55	65	95
O	25.5	37	46	72
Q	71°	72°	67.4°	67.2°
BS	1/8"	1/8"	1/4"	3/8"
M	5.5	6.6	9	13.5
I	9.5	11	14.5	20
STROKE ±	23.5	30	36	55
OIL VOL push	12cc	24cc	45 cc	171cc
OIL VOL pull	8cc	16cc	31cc	147cc
WEIGHT	1.5 kg	2.5 kg	4 kg	11 kg
STD. STRAP PART NOS.	3204400	3201700	3200500	3203400

§ Force is specified at 150 bar.

A - Clamp Port
B - Declamp Port

STRAP

PART NO.	U	V	AB	DB	R	W	SP	ST	Z	CT	CA	WA	TP	X	Y	CH	WEIGHT
3204400	24.3	16.5	6.5	10	16	8	12	6	18.5	23.5	6	11.8	M6	6	6	4	0.15 kg
3201700	32	13	13	18	26	18	11	10.1	24	28	14	22	M6	8	12	5	0.2 kg
3200500	40	15	16	22	32	24	12.5	12.1	30	38	12	26	M10	10	15	6	0.4 kg
3203400	64	20	24	32	48	38	20.5	20.1	48	65	13	38	M16	16	22	10	1 kg



All dimensions are in mm
Overall dimension tolerance ± 0.5 mm